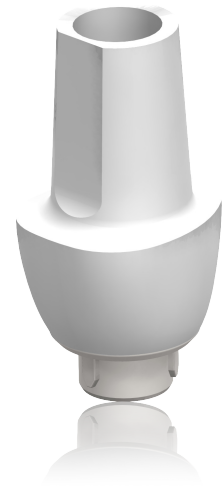


Tissue Formers

Tissue Formers are made in a range of anatomical shapes for all positions and enables simple creation of the optimal emergence profile. The natural profile developed during healing is matched perfectly in provisional and permanent restorative components. The design allows easy, fast and esthetic provisionals.



- *Intended use* – Tissue Formers may be adjusted as a healing abutment or prepared for cement or screw retained provisional restorations.
- *Packaging* – Sterile supplied with a titanium screw.
- *Material* – Biocompatible PEEK and bondable polymer.
- *Esthetiline Solution* – Tissue Formers are part of the Esthetiline solution. The optimal result is achieved by choosing the same type of provisional and permanent restoration and the same position as during healing.
- *Abutment modification* – Tissue Formers may be easily modified by grinding with a bur chairside, intra- or extra-orally, or by the technician on a laboratory model.
- *Indexing* – It is recommended that the implant is indexed prior to placing the Tissue Former to ensure optimal placement and minimal preparation. All Tissue Formers have a plane in the buccal direction and are non-rotational.
- *Procedure* – Placement of Tissue Formers at implant placement or abutment connection, guides the soft tissue and enables simple creation of the optimal emergence profile. For more information please refer to the Neoss Implant System Guidelines.

Note: The trans-gingival section on Tissue Formers is slightly smaller buccally than matching restorative components in order to provide additional soft tissue volume.

Assortment

Item no.	Description
31270	Tissue Former - Wide Incisor
31271	Tissue Former- Narrow Incisor
31272	Tissue Former - Canine
31273	Tissue Former - Pre-molar
31274	Tissue Former - Molar

Note: 31270 - 31274 replace previous articles 31250 - 31254

